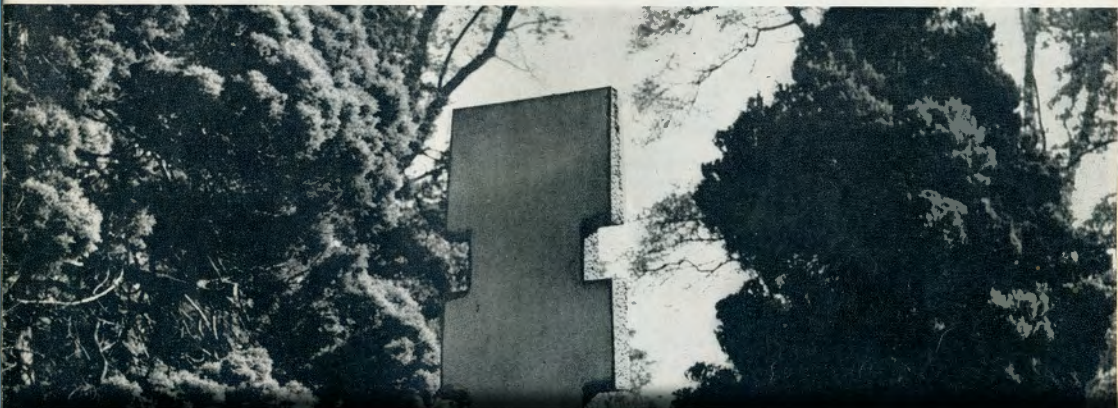


# The ARTS Review



Clive Sheppard is a young sculptor of the 'Charing Cross' school whose forms in polished, stained and textured wood describe new dimensions of allegory and association. These large, architectonic structures, by virtue of their organic, worn surface qualities as well as their subtlety of space and shape, have a boldness and largeness of vision without appearing dehumanised and mechanistic. Sheppard's sculpture has the mellowness of old furniture, and much of its structural honesty and rightness, allied to qualities of symbolic and legendary allusion, not too obvious archetypes and creative myths. Its ideal setting would perhaps be large glass and concrete interiors, whose cold geometry would be an excellent foil for these very characterful forms instinct with life.

ALAN STEVENSON

## London Galleries

Paul Feiler, Clive Sheppard New Vision Centre Gallery

Right CLIVE SHEPPARD  
*Spar Head* 1963 6ft. long

Below left *The Artist at work on Genesis* 1964 5ft. high  
New Vision Centre Gallery.

